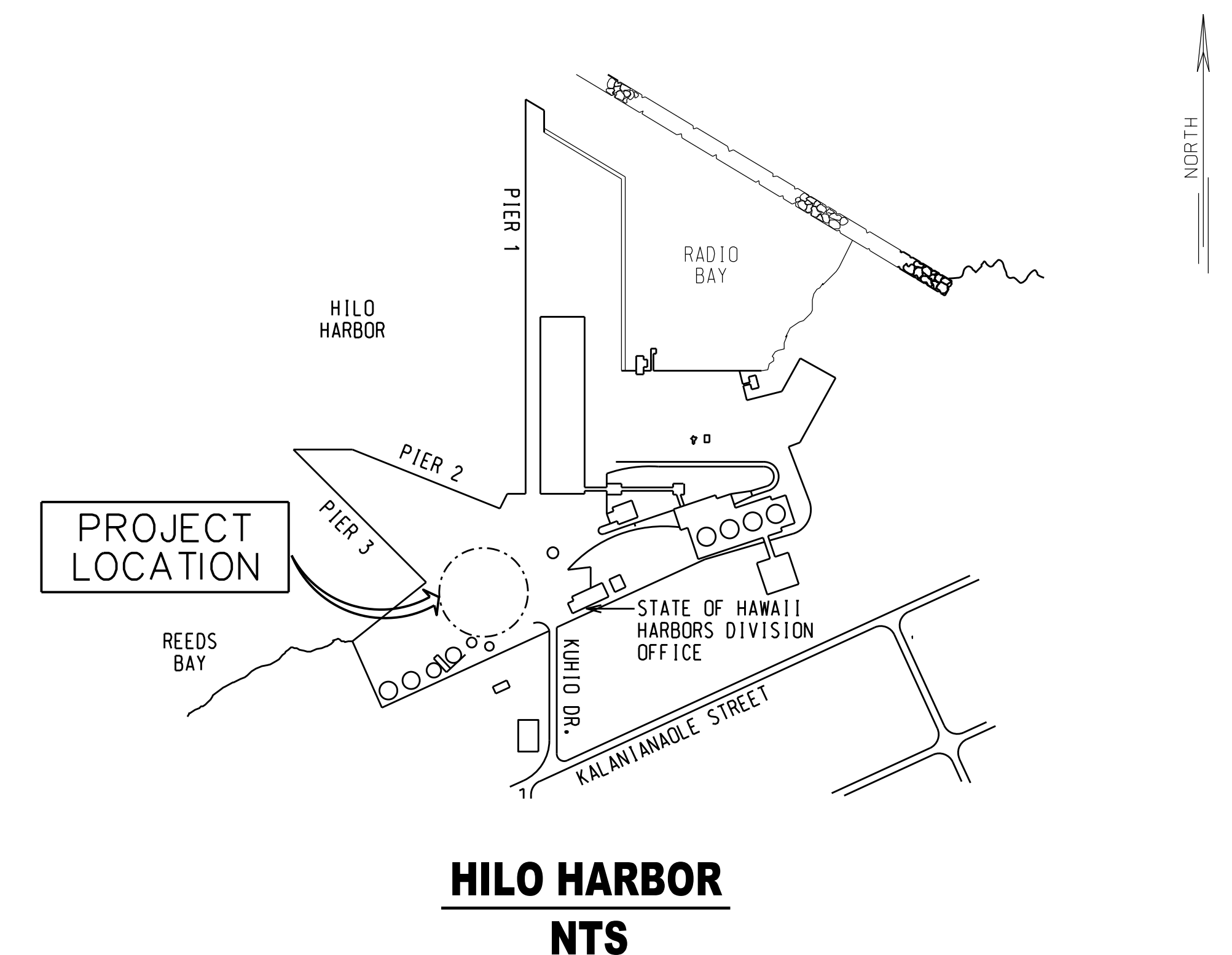
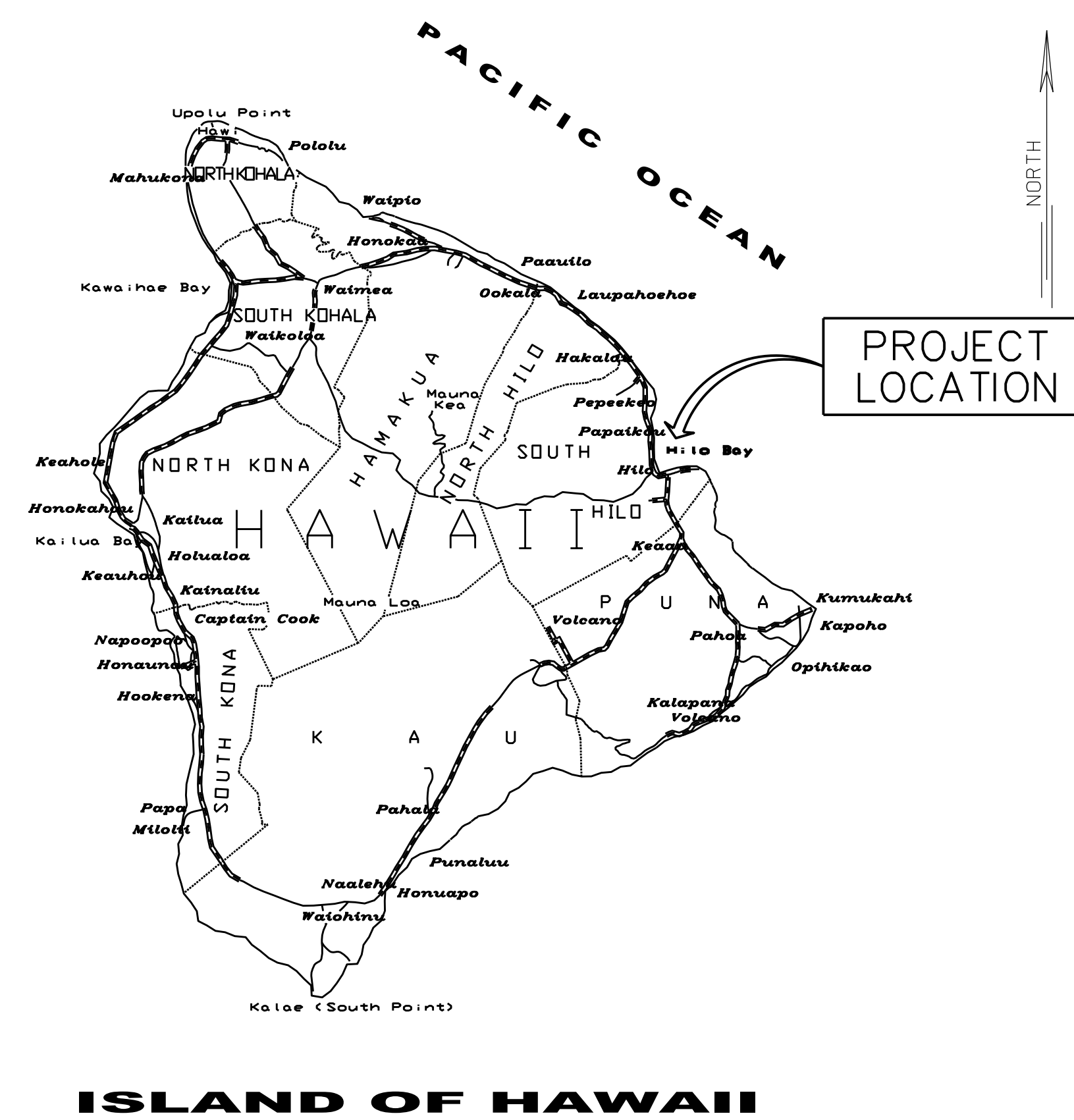
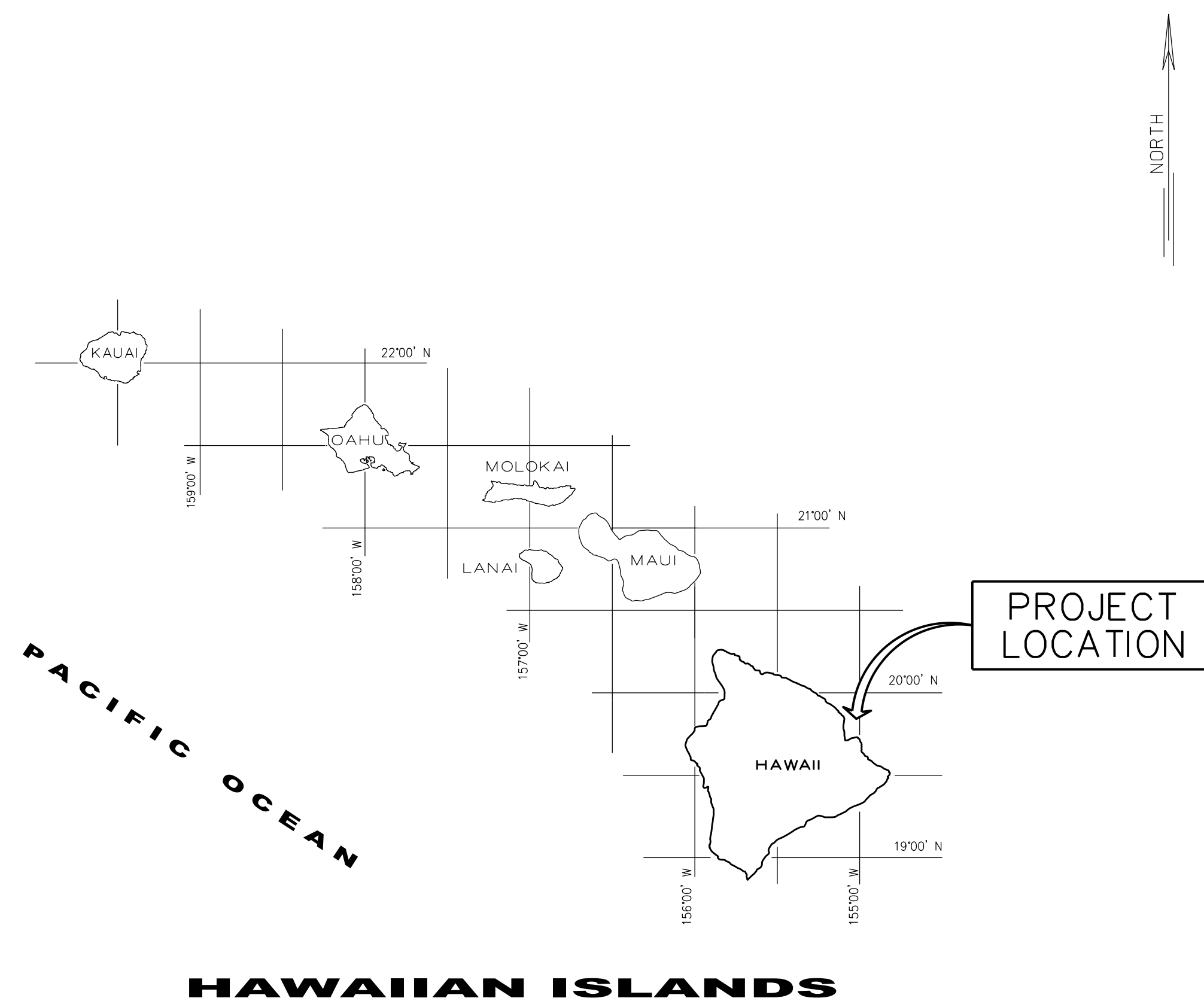



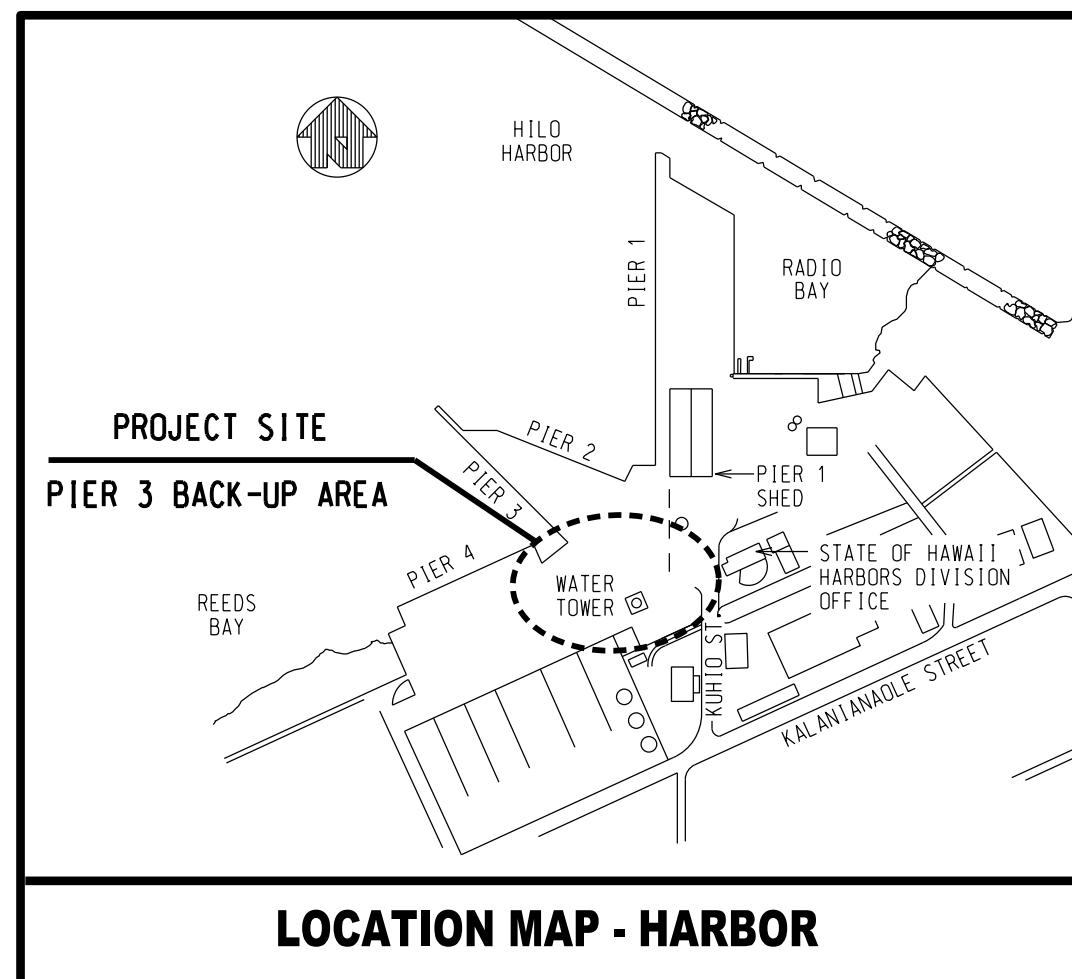
INSTALL WHEEL STOPS AT PIER 3 CONTAINER YARD, HILO HARBOR, HAWAI'I

STATE OF HAWAII
DEPARTMENT OF TRANSPORTATION
HARBORS

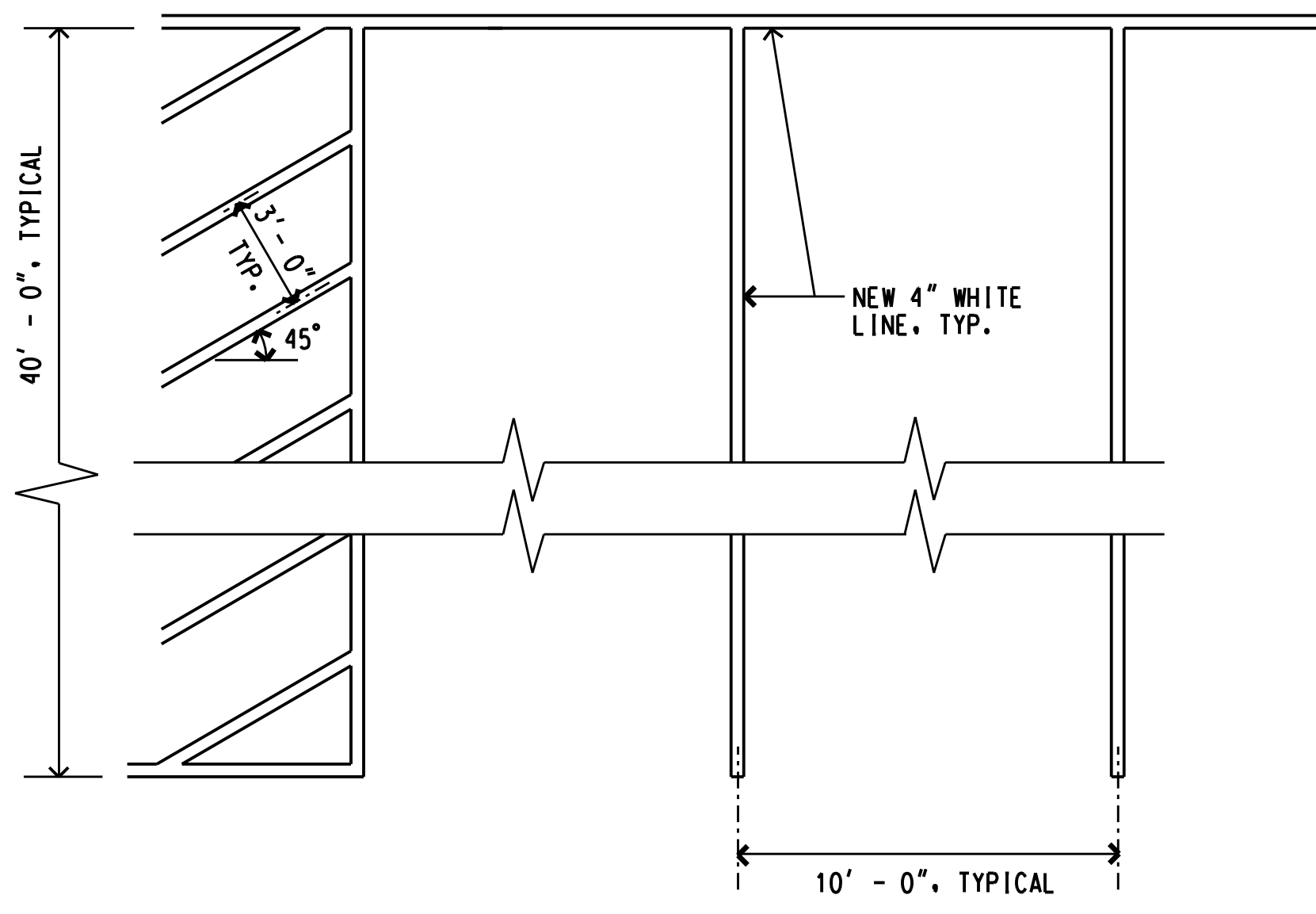
S50211



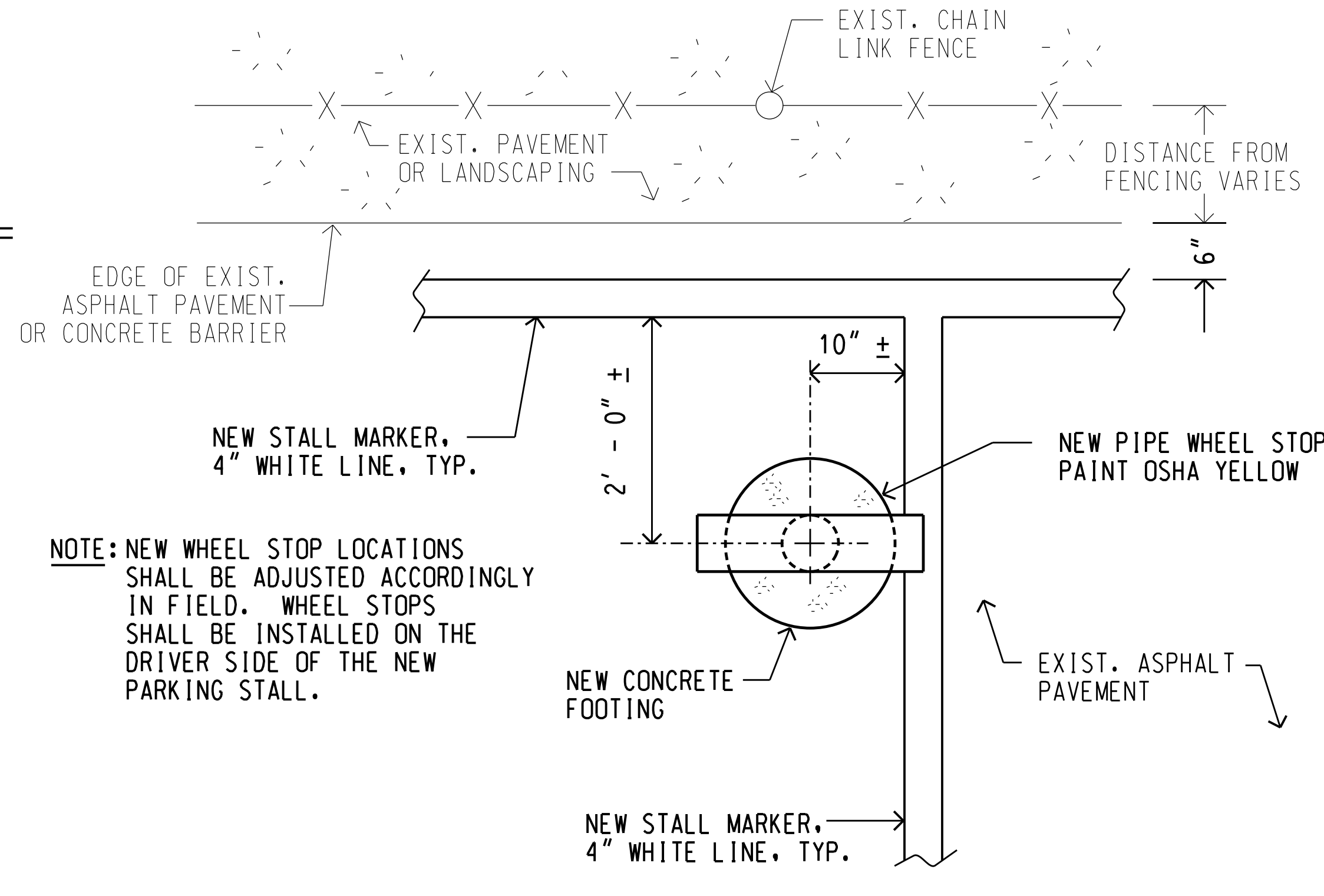
DEPARTMENT OF TRANSPORTATION STATE OF HAWAII		SHEET 1
APPROVED BY: 	Aug 3, 2023	
FOR DIRECTOR OF TRANSPORTATION	DATE	1 OF 2 SHEETS



LOCATION MAP - HARBOR

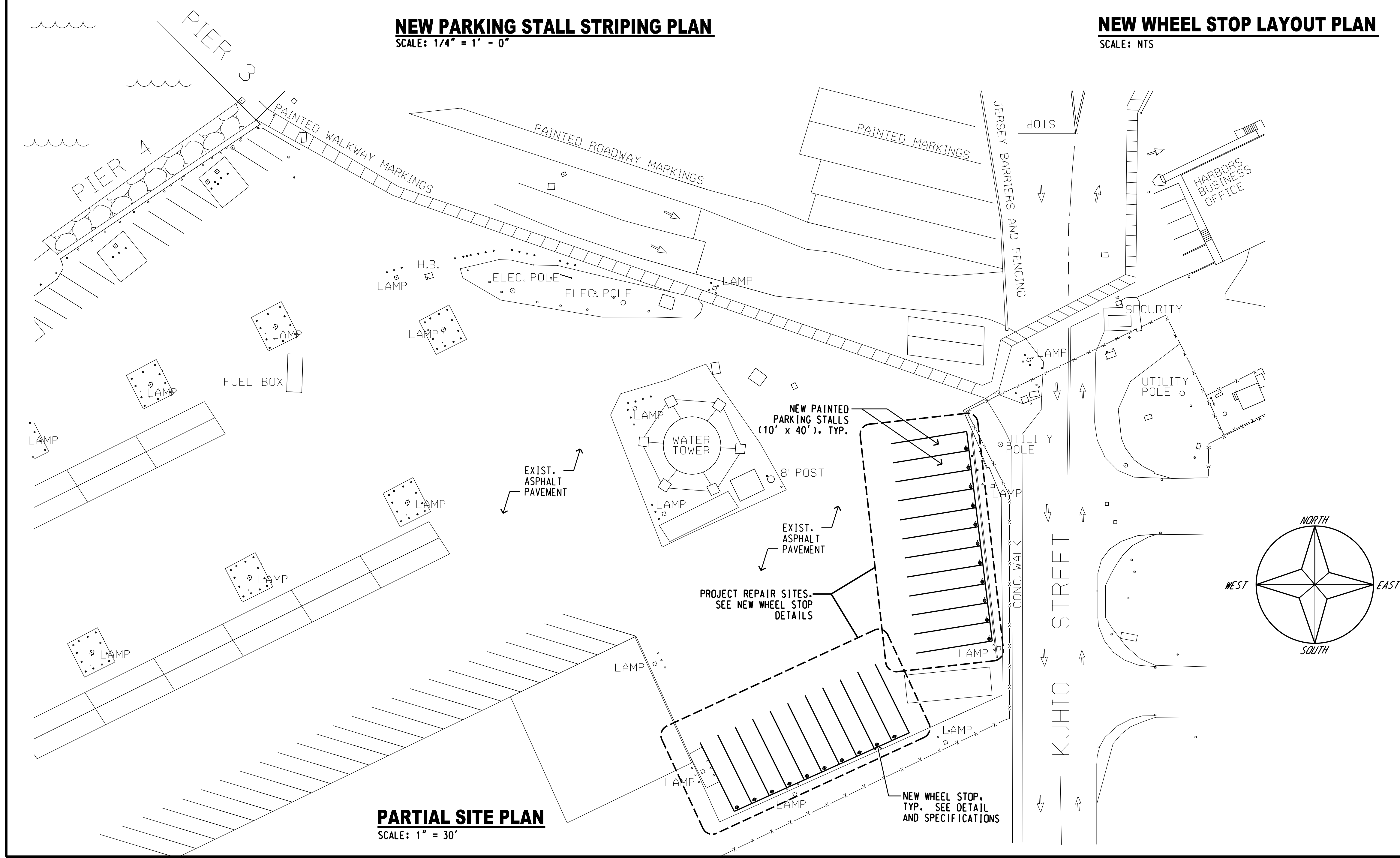


NEW PARKING STALL STRIPING PLAN
SCALE: 1/4" = 1' - 0"

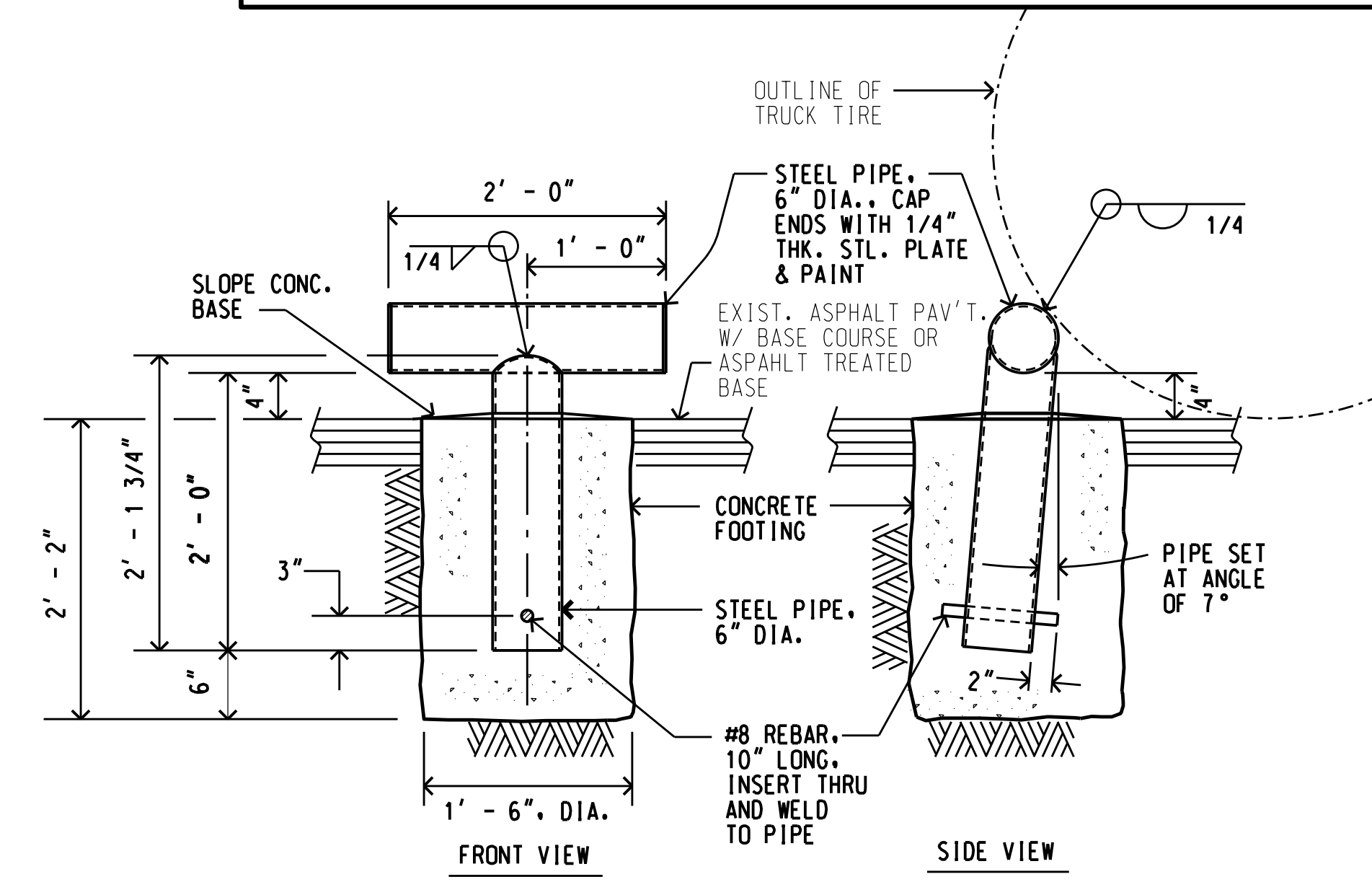


NEW WHEEL STOP LAYOUT PLAN
SCALE: NTS

- GENERAL NOTES**
- CONTRACTOR SHALL VERIFY CONDITIONS IN FIELD PRIOR TO BIDDING. EXISTING CONDITIONS ARE BASED ON THE BEST AVAILABLE INFORMATION. THE CONTRACTOR SHALL MAKE NO CLAIM FOR EXTRA COMPENSATION SHOULD ACTUAL EXISTING CONDITIONS DIFFER FROM THOSE SHOWN ON THE PLANS. THE CONTRACTOR SHALL VERIFY CONDITIONS AND DIMENSIONS IN THE FIELD PRIOR TO ORDERING MATERIALS. SEE THE SPECIFICATIONS FOR ADDITIONAL INFORMATION.
 - CONTRACTOR SHALL EXERCISE CAUTION TO PREVENT DAMAGE TO EXISTING STRUCTURES, UTILITIES, AND EQUIPMENT IN THE AREA.
 - CONTRACTOR SHALL COORDINATE ITS WORK WITH THE HARBORS HAWAII DISTRICT MANAGER AND THE CONSTRUCTION ENGINEER SO AS TO MINIMIZE INTERFERENCE WITH HARBOR OPERATIONS.
 - THE CONTRACTOR WILL NOT BE ALLOWED TO WORK WHEN A PASSENGER CRUISE VESSEL OR FUEL BARGE ARE BERTHED AT THE PIER. THE EXACT SCHEDULING OF THE WORK AND RESTRICTIONS ON THE CONTRACTOR'S ACTIVITIES WILL BE ESTABLISHED AT THE PRE-CONSTRUCTION MEETING.
 - THE CONTRACTOR SHALL COMPLY WITH THE CLEAN WATER ACT AND THE STATE OF HAWAII DEPARTMENT OF TRANSPORTATION HARBORS STORMWATER MANAGEMENT PROGRAM. NO POLLUTANTS ARE ALLOWED TO BE DISCHARGED DIRECTLY OR INDIRECTLY THROUGH THE HARBORS SMALL MS4 OR OTHER POTENTIAL PATHWAYS INTO ADJACENT HARBOR WATERS.
 - THE CONTRACTOR SHALL SUBMIT A SITE-SPECIFIC BEST MANAGEMENT PRACTICE (BMP) PLAN TO HARBORS CONSTRUCTION ENGINEER FOR REVIEW AND ACCEPTANCE PRIOR TO THE START OF ANY CONSTRUCTION WORK. THE SITE-SPECIFIC BMP PLAN SHALL COMPLY WITH THE TEMPORARY WATER POLLUTION, DUST, AND EROSION CONTROL ARTICLE IN THE SPECIFICATIONS AND PROPOSAL.
 - IN CASE OF SPILL, LEAK, OR OTHER RELEASE CONTAINING A HAZARDOUS SUBSTANCE OR OIL, THE CONTRACTOR SHALL NOTIFY APPROPRIATE FACILITY PERSONNEL, EMERGENCY RESPONSE AGENCIES, AND REGULATORY AGENCIES FOLLOWING NOTIFICATION PROCEDURES, AND SHALL NOTIFY HARBORS ENVIRONMENTAL HOTLINE (808-587-1962) AND DESIGNATED CONSTRUCTION ENGINEER IMMEDIATELY (I.E. WITHIN 24-HOURS). SUCH CONTACT INFORMATION MUST BE SHOWN IN LOCATIONS THAT ARE READILY ACCESSIBLE AND AVAILABLE.
 - ALL STRUCTURES AND PORTIONS OF STRUCTURES SHOWN ON THE PLANS ARE EXISTING UNLESS SPECIFICALLY NOTED. CLEAR WITH HAWAII ONE CALL CENTER (HOCC) BEFORE EXCAVATION (811) OR (866-427-7287).
 - 21 WHEEL STOPS ARE INCLUDED IN THE PROPOSAL SCHEDULE FOR BIDDING PURPOSES. THE EXACT LOCATIONS OF THE NEW WHEEL STOPS WILL BE CONFIRMED IN THE FIELD AND THE QUANTITIES ARE SUBJECT TO CHANGE BY INSTRUCTION FROM THE CONSTRUCTION ENGINEER.
 - SEE THE SPECIFICATIONS FOR ADDITIONAL INFORMATION.



PARTIAL SITE PLAN
SCALE: 1" = 30'



NEW PIPE WHEEL STOP DETAIL
SCALE: 1" = 1' - 0"

REV	DATE	DESCRIPTION	BY	APPROVED
STATE OF HAWAII DEPARTMENT OF TRANSPORTATION HARBORS				
JOB TITLE INSTALL WHEEL STOPS AT PIER 3 CONTAINER YARD HILO HARBOR, HILO, HAWAII				
SITE PLAN, LAYOUT PLAN, DETAILS, AND NOTES				
DESIGNED BY: JM	JOB NUMBER: S50211			SHEET: 2
DRAWN BY: JM				2 OF 2 SHTS.
CHECKED BY: AF				
DATE: JULY 2023				
SCALE: AS SHOWN				